



# The Role of Sinis MPA in the Maristanis Project

Alessandro Murana

Cabras Municipality Council member for Environment

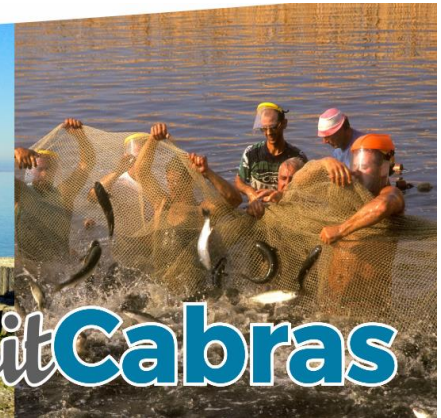
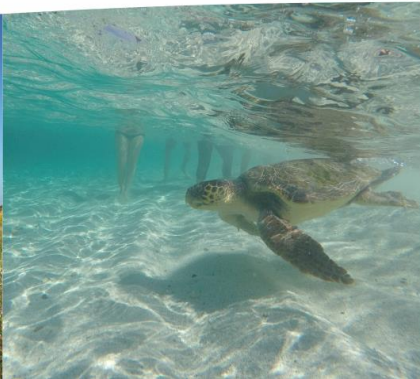
Cabras, November 30, 2017



# Sinis MPA |



- The Sinis Peninsula - Mal di Ventre Island Marine Protected Area, was established in 1997, covers 250 sq km and more than 30 km of coastalline, is managed by the Municipality of Cabras

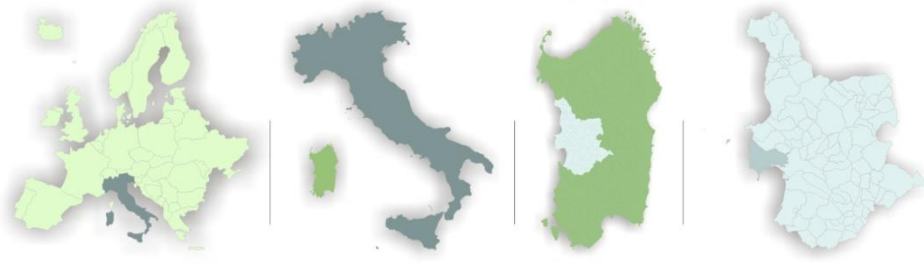


#VisitCabras

# Sinis MPA | Profile

Sinis MPA is situated on the central-western coast of Sardinia, at about 6 km from Oristano, chief town of the Province.

The territory is characterized by its barycentric position in Sardinia and in the Mediterranean sea.

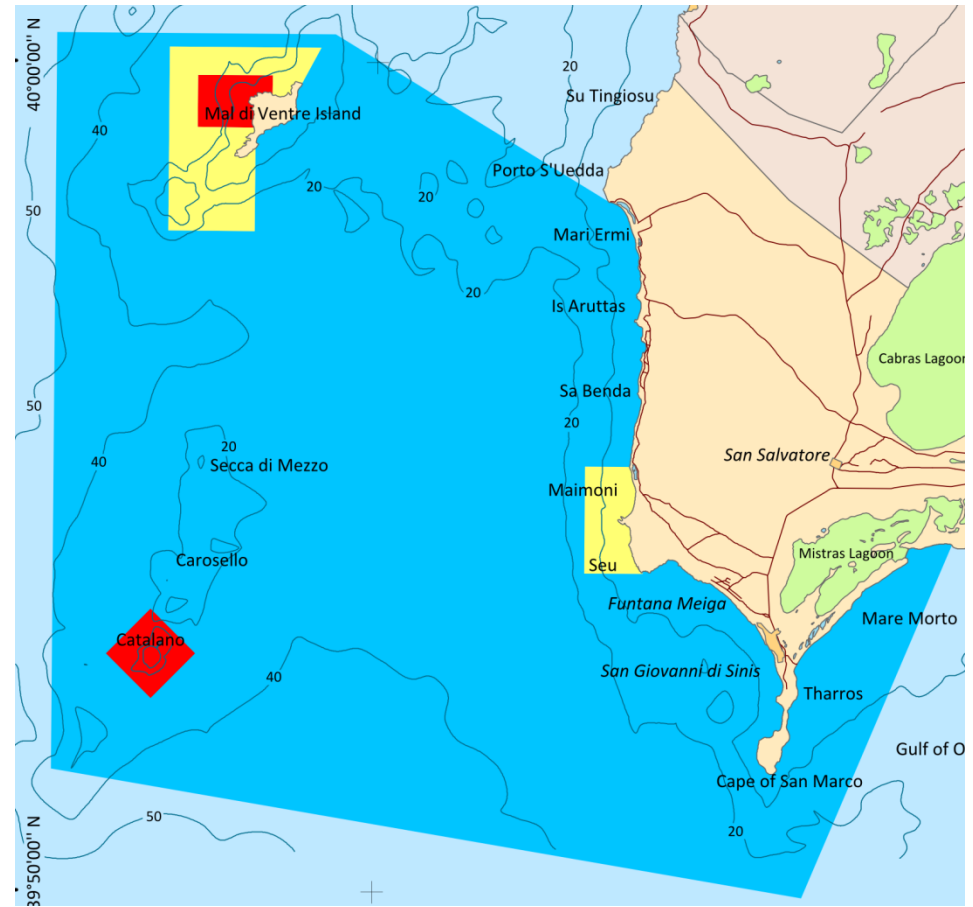


**EU**

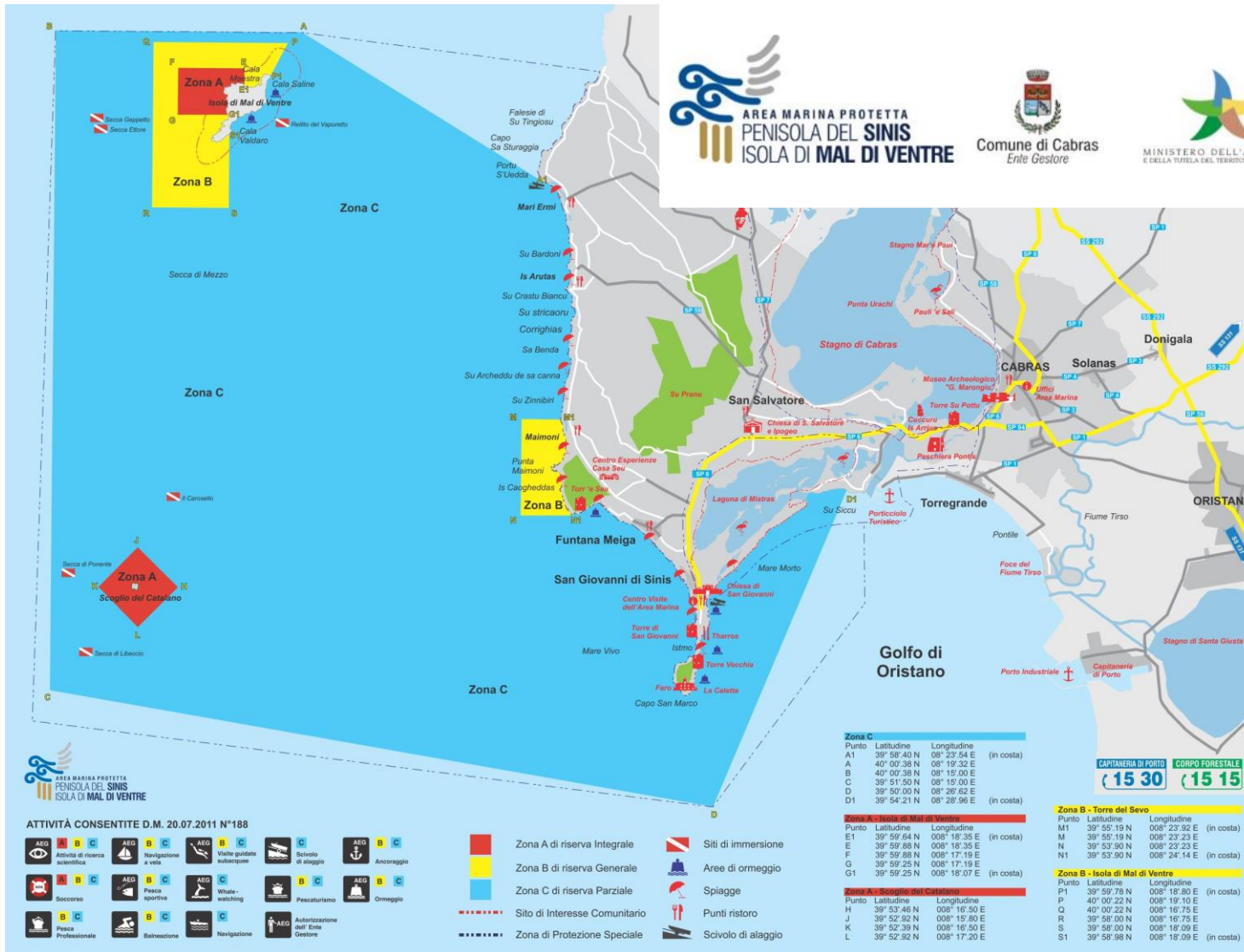
**I**

**SAR**

**OR**



# “Penisola del Sinis – Isola di Mal di Ventre” Marine Protected Area



Established  
1997

Surface  
26.703 hectares

- SPAMI - 1 Marine Site of Community Importance (SCI)
- 1 Special Area of Conservation (SAC)
- European Charter for Sustainable Tourism
- 2 Coastal Site of Community Importance (SCI)
- 3 Special Protection Area (SPA)
- EDEN Destination
- 2 Ramsar Sites

# Sinis MPA

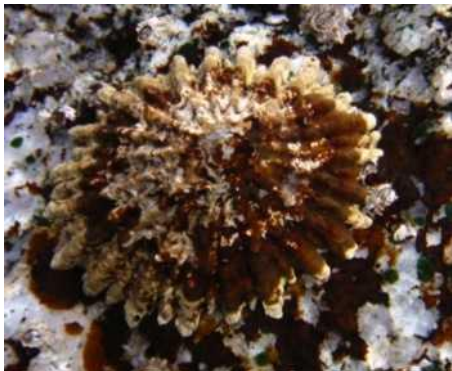
## Main conservation objectives

### Objectives of the MPA (Ministry Decree 2011):

- a) The protection and valorisation of the natural, chemical, physical and marine and coastal biodiversity, with particular attention to the existing large areas of *Posidonia oceanica*, also through environmental restoration measures;
- b) The promotion of environmental education and the dissemination of knowledge about marine and coastal environment of the MPA, also through the creation of educational and informative programmes;
- c) The implementation of programmes of study, monitoring and scientific research in natural science and environmental protection, in order to ensure the systematic knowledge of the area;
- d) The promotion of sustainable development of the area, particularly with regard to the valorisation of traditional activities, local culture and eco-tourism, the regulation of tourist flows into the sea and along the coast, and to the use by the socially sensitive.

# Sinis MPA | Main actions

- **Monitoring of protected marine species:** e.g. Ribbed Mediterranean Limpet (*Patella ferruginea*), Sea urchin (*Paracentrotus lividus*), Noble pen shell (*Pinna nobilis*)
- **Monitoring of sea grass Mediterranean meadows** (*Posidonia oceanica*)
- **Actions to protect the coast:** e.g. footpath leading to the beach to preserve the coastal vegetation, stabilization of the dunes, mooring-buoys areas, etc...



# Sinis MPA | Main actions

- **Awarness campaigns:** e.g. Against illegal camping on the beach, the protected marine species and the theft of quartziferous sand.
- **Environmental education activities:** specially in schools and local artisanal and recreational fishermen
- **Marine Turtle Rescue Centre management**



**Grazie!**

